



THE V-SERIES | DOWNLIGHTS

eaglelightingaustralia

'Member of the Fagerhult Group'

V-series is a new range of LED downlights for use in commercial, retail and various other indoor applications.

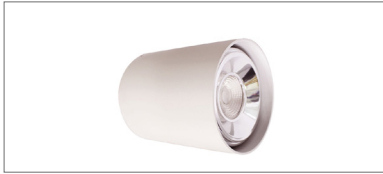
Manufactured using high quality castings with CREE LEDs and Philips/Tridonic drivers, the range consists of both recessed and surface mounted options.

Choose from fixed or adjustable with colour options of 3000K or 4000K.

Lumen packages of between 800lm and 3400lm are available in a variety of beam angles.



V-Series Surface Mounted EL-V16045-01



V-Series Surface Mounted EL-V16005-01



V-Series Surface Mounted EL-V16005-01



V-Series Surface Mounted EL-V16045-01

## V-SERIES SURFACE MOUNTED

W	Ø (mm)	Sys. lm	Lum. lm	lm/W	CCT (K)	Beam°	IP Rating	Code
V-Series   Surface Mounted								
20	118	2000	1817	88	4000	50	IP44	EL-V16045-01-
20	125	2000	1843	91	4000	36	IP20	EL-V16005-01-



These surface mounted luminaires come with a white finish and either medium or large beam width options.

High-quality lenses (EL-V16005-01) or reflectors (EL-V16045-01) are used, with the recessed light source providing good glare control.

DALI option is available for all models.

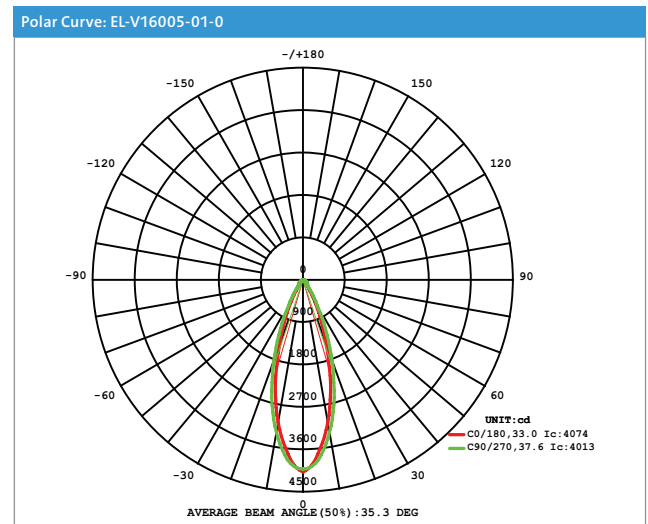
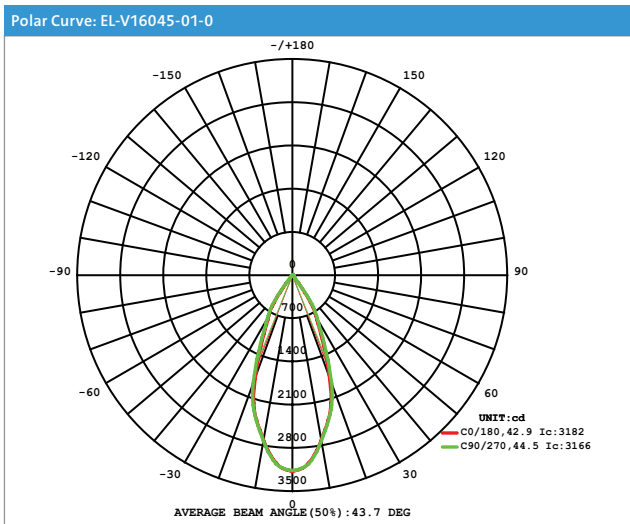
Wiring options	Suffix
Standard	-0
DALI/STD terminal block	-2

Add one suffix code to the end of the luminaire code to indicate required function.

Technical specifications
Total Luminaire Efficacy ≥88lm/W
MacAdam 3 SDCM
System guarantee 5 years
CRI ≥84
R9 ≥19
Lifetime:



Dimensions (mm)		
FITTING	FITTING DIMENSIONS	
	Ø	A
EL-V16045-01-0	118	120
EL-V16005-01-0	125	152





V-Series EL-V16108-01



V-Series EL-V16108-01

## V-SERIES ADJUSTABLE TYPE 1

W	Ø (mm)	Sys. lm	Lum. lm	lm/W	CCT (K)	Beam°	Code
V-Series   Recessed							
11	90	1000	805	75	3000	60	EL-V16154-01-
11	90	1000	900	84	4000	60	EL-V16154-02-
15	90	1400	1300	87	4000	60	EL-V16108-01-
15	90	1400	1137	76	3000	60	EL-V16108-02-

Wiring options	Suffix
Standard	-0
DALI/STD terminal block	-2

Add one suffix code to the end of the luminaire code to indicate required function.

Technical specifications
Total Luminaire Efficacy $\geq 62\text{lm/W}$
MacAdam 3 SDCM
System guarantee 5 years
CRI $\geq 83$
R9 $\geq 11$



These adjustable recessed models have similar looks and the same diameter but come in 2 different lumen packages. The model with the higher lumen package has a slightly taller heatsink to ensure proper thermal performance. Beam shaping is achieved through a lens-reflector combination.

The fixtures can be tilted up to  $\pm 30$  degrees.

DALI option is available for all models.

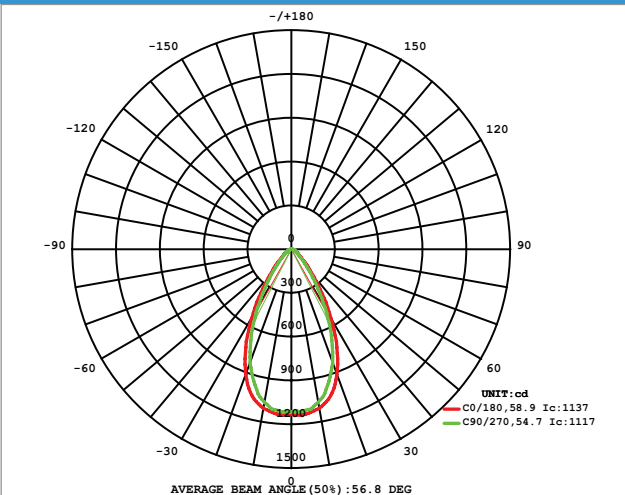


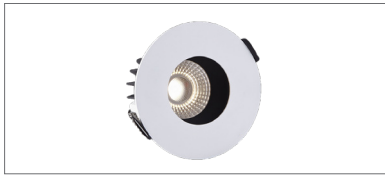
### Dimensions (mm)



FITTING	FITTING DIMENSIONS		CUTOUT
	Ø	A	
EL-V16154-01	90	47	83
EL-V16154-02	90	47	83
EL-V16108-01	90	67	83
EL-V16108-02	90	67	83

### Polar Curve: EL-V16108-02





V-Series EL-V16255-01



V-Series EL-V16255-01

## V-SERIES

### ADJUSTABLE TYPE 2

W	Ø (mm)	Sys. lm	Lum. lm	lm/W	CCT (K)	Beam°	Code
V-Series   Recessed							
11	90	820	741	69	4000	24	EL-V16255-01-
11	90	820	670	62	3000	24	EL-V16255-02-



These adjustable recessed models have a special recessed design with a matte black internal surface for maximal glare control. Beam shaping is achieved through a lens-reflector combination.

The fixtures can be tilted up to  $\pm 30$  degrees. DALI option is available for all models.

#### Wiring options

Wiring options	Suffix
Standard	-0
DALI/STD terminal block	-2

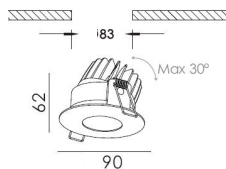
Add one suffix code to the end of the luminaire code to indicate required function.

#### Technical specifications

Total Luminaire Efficacy $\geq 62\text{lm/W}$
MacAdam 3 SDCM
System guarantee 5 years
CRI $\geq 83$
R9 $\geq 11$

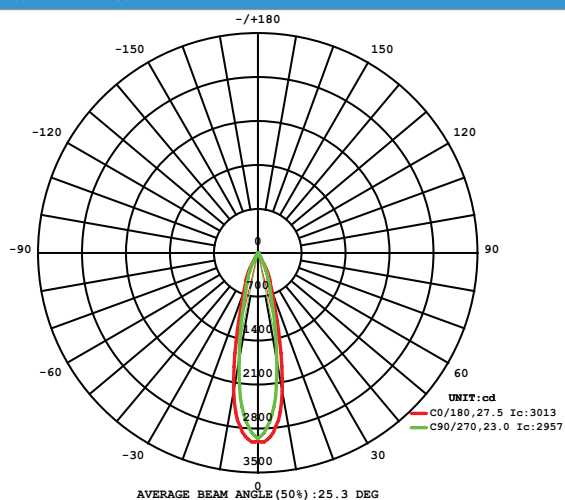


#### Dimensions (mm)



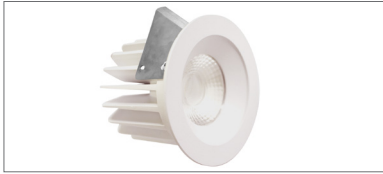
FITTING	FITTING DIMENSIONS		CUTOUT
	Ø	A	Ø
EL-V16255-01-	90	62	83
EL-V16255-02-	90	62	83

#### Polar Curve: EL-V16255-01





V-Series EL-V16103-01



V-Series EL-V16104-01



V-Series EL-V16103-01



V-Series EL-V16104-01

## V-SERIES FIXED TYPE 1

W	Ø (mm)	Sys. lm	Lum. lm	lm/W	CCT (K)	Beam°	Code
V-Series   Recessed							
8	65	800	715	93	4000	40	EL-V16103-01-
15	82	1400	1302	87	4000	36	EL-V16104-01-



These fixed models come in a variety of options in terms of lumens and beamwidths making them suitable for a wide range of applications.

Beam shaping is achieved through a lens-reflector combination.

DALI option is available for all models.

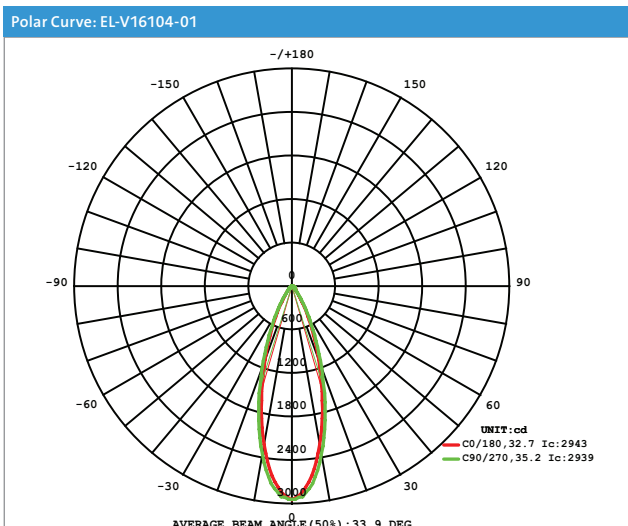
Wiring options	Suffix
Standard	-0
DALI/STD terminal block	-2

Add one suffix code to the end of the luminaire code to indicate required function.

Technical specifications
Total Luminaire Efficacy $\geq 93\text{lm/W}$
MacAdam 3 SDCM
System guarantee 5 years
CRI $\geq 84$
R9 $\geq 18$



Dimensions (mm)			
	FITTING DIMENSIONS		CUTOUT
FITTING	Ø	A	Ø
EL-V16103-01-	65	40	58
EL-V16104-01	82	67	70





V-Series EL-V16195-01



V-Series EL-V16201-01



V-Series EL-V16201-01



V-Series EL-V16195-01

## V-SERIES FIXED TYPE 2

W	Ø (mm)	Sys. lm	Lum. lm	lm/W	CCT (K)	Beam°	Code
V-Series   Recessed							
22	115	1600	1493	67	4000	75	EL-V16195-01-
26	150	1800	1669	64	4000	75	EL-V16201-01-



These high-output fixed models use quality diffuser optics to obtain a low-glare 75-degree beam.

DALI option is available for all models.

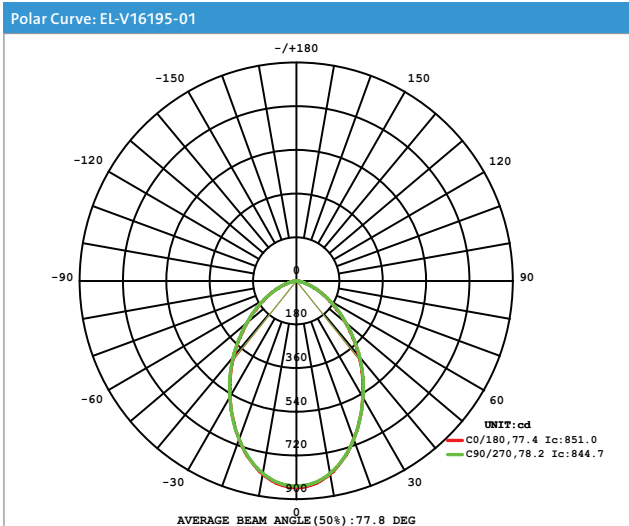
Wiring options	Suffix
Standard	-0
DALI/STD terminal block	-2

Add one suffix code to the end of the luminaire code to indicate required function.

Technical specifications
Total Luminaire Efficacy $\geq 64\text{lm/W}$
MacAdam 3 SDCM
System guarantee 5 years
CRI $\geq 83$
R9 $\geq 17$



Dimensions (mm)			
FITTING	FITTING DIMENSIONS		CUTOUT
	Ø	A	Ø
EL-V16195-01	115	98	105
EL-V16201-01	150	123	140





V-Series EL-V16270-01



V-Series EL-V16270-01

## V-SERIES

### FIXED TYPE 3

W	Ø (mm)	Sys. lm	Lum. lm	lm/W	CCT (K)	Beam°	Code
V-Series   Recessed							
22	110	2000	1817	82	4000	60	EL-V16285-01-
22	110	2000	1867	84	4000	36	EL-V16285-02-
22	150	2000	1874	84	4000	60	EL-V16270-01-
30	150	3400	2461	81	4000	36	EL-V16270-02-



Providing the highest lumen values in the family, these fixed recessed models use reflectors to precisely control the beam.

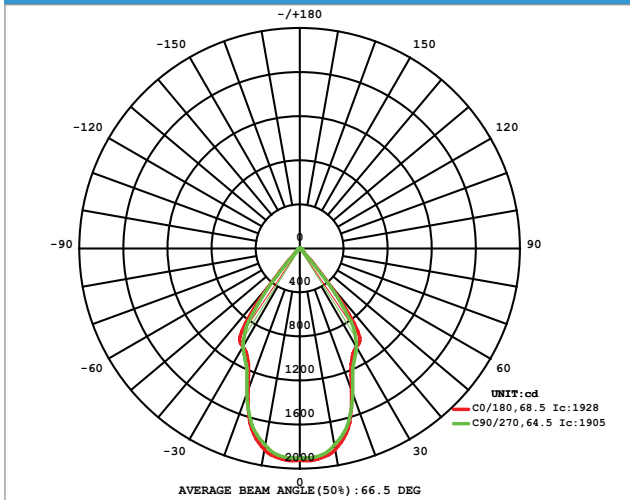
DALI option is available for all models.

Wiring options	Suffix
Standard	-0
DALI/STD terminal block	-2

Add one suffix code to the end of the luminaire code to indicate required function.

Technical specifications
Total Luminaire Efficacy $\geq 82 \text{ lm/W}$
MacAdam 3 SDCM
System guarantee 5 years
CRI $\geq 84$
R9 $\geq 16$

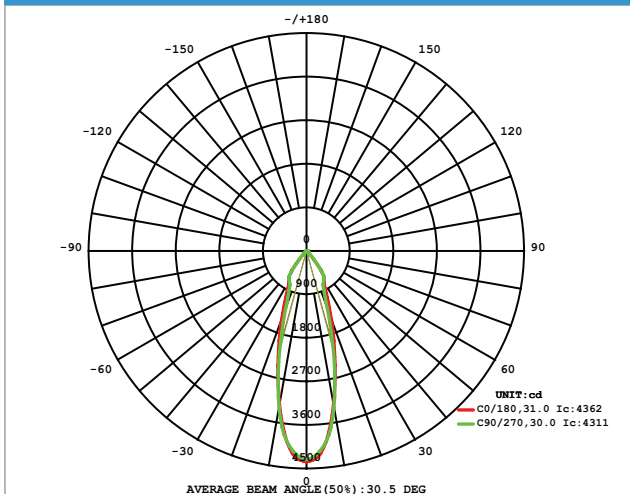
Polar Curve: EL-V16285-01



Dimensions (mm)

FITTING	FITTING DIMENSIONS		CUTOUT
	Ø	A	Ø
EL-V16285-01	110	130	100
EL-V16285-02	110	130	100
EL-V16270-01	150	152	140
EL-V16270-02	150	152	140

Polar Curve: EL-V16285-02





# eagle lighting australia



[www.eaglelighting.com.au](http://www.eaglelighting.com.au)

## VICTORIA

17-19 Jets Court  
Melbourne Airport VIC 3045  
P 03 9344 7444  
F 03 9344 7433

## NEW SOUTH WALES

Unit 4, 21 Mars Road  
Lane Cove NSW 2066  
P 02 9420 5799  
F 02 9420 5988

## QUEENSLAND

53 Caswell Street  
East Brisbane QLD 4169  
P 07 3891 0744  
F 07 3891 0755

## AUSTRALIAN CAPITAL TERRITORY

M 0411 889 406

## DISTRIBUTORS - AUSTRALIA

### WESTERN AUSTRALIA

H.I. Lighting Pty Ltd  
111 Broadway  
Bassendean WA 6054  
P 08 9377 1322  
F 08 9377 1761

### SOUTH AUSTRALIA

H.I. Lighting SA Pty Ltd  
8 Hender Avenue  
Magill SA 5072  
P 08 8304 8500

### TASMANIA

Southern Lighting & Distribution  
34 Federal Street  
North Hobart TAS 7000  
P 03 6231 5599  
F 03 6231 5211

---

## DISTRIBUTORS - NEW ZEALAND

### AUCKLAND

Fagerhult New Zealand  
Level 1, 18A Neilpark Drive  
East Tamaki, Auckland 2013  
M +64 21 655 609  
M +64 21 509 248

### WELLINGTON

Fagerhult New Zealand  
M +64 21 597 900

### SOUTH ISLAND

Fagerhult New Zealand  
M +64 21 193 4430