

THE V-SERIES SURFACE MOUNTED

INSTALLATION INSTRUCTIONS

- + PLEASE READ THIS GUIDE CAREFULLY BEFORE INSTALLING OR MAINTAINING THIS EQUIPMENT.
- + DATA SHOULD BE USED AS AN INDICATION ONLY.
- + GOOD ELECTRICAL PRACTICES SHOULD BE FOLLOWED AT ALL TIMES.
- + MUST ONLY BE INSTALLED BY A LICENSED ELECTRICIAN.
- + IF THE EXTERNAL FLEXIBLE CABLE OR CORD OF THIS LUMINAIRE IS DAMAGED, IT SHALL BE EXCLUSIVELY REPLACED BY THE MANUFACTURER OR HIS SERVICE AGENT OR A SIMILAR QUALIFIED PERSON IN ORDER TO AVOID A HAZARD
- + FOR INDOOR USE ONLY

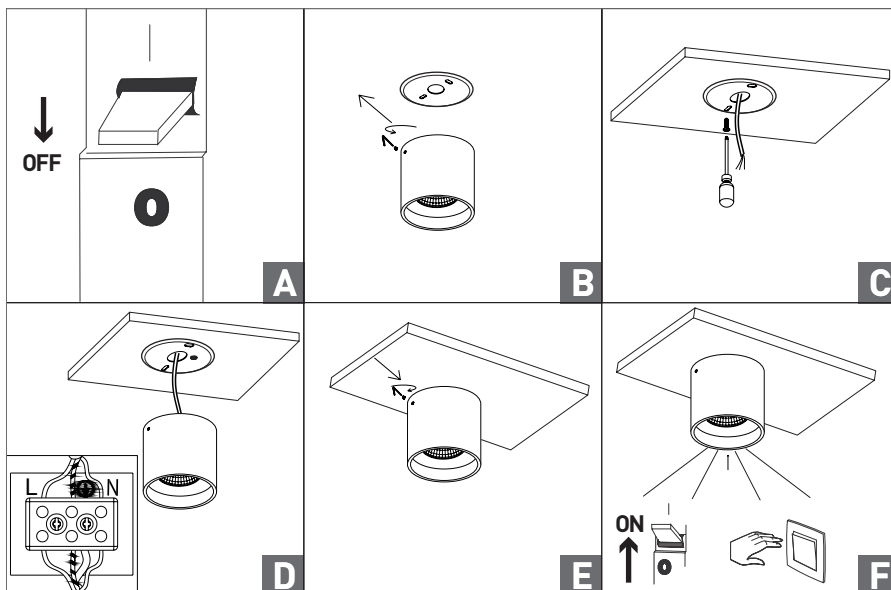
THIS GUIDE IS FOR THE FOLLOWING LUMINAIRE MODELS

EL-V16005

EL-V16045

INSTALLATION INSTRUCTIONS

1. Make sure that power to the circuit is OFF.
2. Remove the mounting plate by loosening the 3 grub screws using the hex key provided.
3. Make sure that the end of the power cable is taken out through one of the 3 holes of the mounting plate.
4. Fix the mounting plate onto the ceiling by using 2 mounting screws (provided).
5. Wire mains to the primary side of the terminal block observing correct polarity of L (brown) and N (blue) and Earth (yellow/green).
6. Lift the fixture up on to the mounting plate, tighten the 3 grub screws, making sure that the luminaire body is held in place securely by ALL 3 grub screws. Avoid over-tightening.
7. Restore power and test installation.



GENERAL INFORMATION

- A qualified electrician, in accordance with AS/NZS 3000:2007 wiring regulations should carry out connection to mains wiring.
- Ensure that the rated voltage and frequency requirements are compatible with the available mains supply, 220-240V 50Hz
- Cleaning of reflectors and lenses should be carried out using clean, soft and lint free cloths and anti-static cleaning fluid.
- Do not carry out high voltage insulation test i.e. 500/1000V this may damage the fixtures electrical components.

SPECIFICATION



Luminaire's light distribution is direct.



Denotes which light source/light sources that can be supplied with the luminaire. Several symbols next to the same luminaire indicate that the luminaire is available in different designs.



IP classification:

IP40/20 : IP40 from below: (in its installed position) Protected against solid objects over 1mm (tools, wires and small wires).
IP20 from the rear : (in its installed position) Protected against solid objects over 12mm (fingers).



Class I : Appliances with functioning insulation. Equipped with an earth termination.



This luminaire is not suitable for covering with thermally insulating material. The minimum clearance required in all directions is 100mm



RCM indicates a device's compliance with applicable ACMA technical standards.

HEAD OFFICE | MELBOURNE
EAGLE LIGHTING VIC

17-19 Jets Court
Melbourne Airport VIC 3045
P 03 9344 7444
F 03 9344 7433

SYDNEY
EAGLE LIGHTING NSW

Unit 4, 21 Mars Road
Lane Cove NSW 2066
P 02 9420 5799
F 02 9420 5988

BRISBANE
EAGLE LIGHTING QLD

53 Caswell Street
East Brisbane QLD 4169
P 07 3891 0744
F 07 3891 0755

CANBERRA
EAGLE LIGHTING ACT

M 0411 889 406

eaglelightingaustralia
'Member of the Fagerhult Group'

EAGLE LIGHTING AUSTRALIA PTY LTD
ABN 46 124 400 933