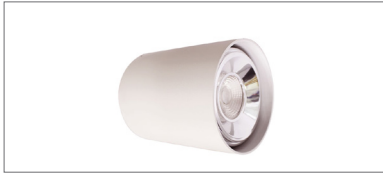




V-Series Surface Mounted EL-V16045-01



V-Series Surface Mounted EL-V16005-01



V-Series Surface Mounted EL-V16005-01



V-Series Surface Mounted EL-V16045-01

V-SERIES SURFACE MOUNTED

W	Ø (mm)	Sys. lm	Lum. lm	lm/W	CCT (K)	Beam°	IP Rating	Code
V-Series Surface Mounted								
20	118	2000	1817	88	4000	50	IP44	EL-V16045-01-
20	125	2000	1843	91	4000	36	IP20	EL-V16005-01-



These surface mounted luminaires come with a white finish and either medium or large beam width options.

High-quality lenses (EL-V16005-01) or reflectors (EL-V16045-01) are used, with the recessed light source providing good glare control.

DALI option is available for all models.

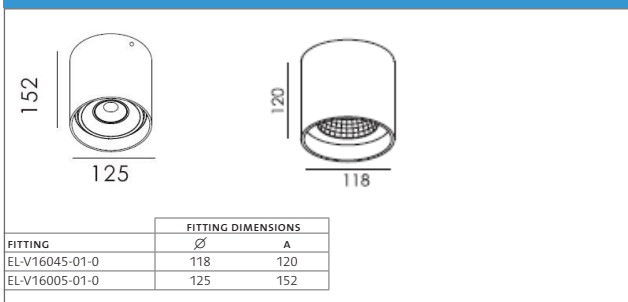
Wiring options	Suffix
Standard	-0
DALI/STD terminal block	-2

Add one suffix code to the end of the luminaire code to indicate required function.

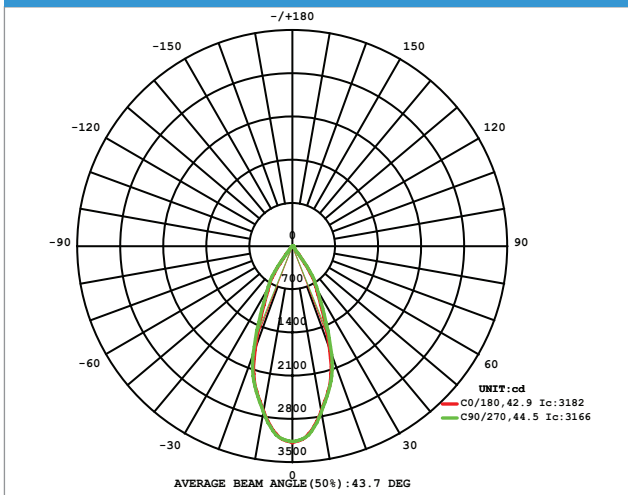
Technical specifications
Total Luminaire Efficacy ≥88lm/W
MacAdam 3 SDCM
System guarantee 5 years
CRI ≥84
R9 ≥19
Lifetime:



Dimensions (mm)



Polar Curve: EL-V16045-01-0



Polar Curve: EL-V16005-01-0

