

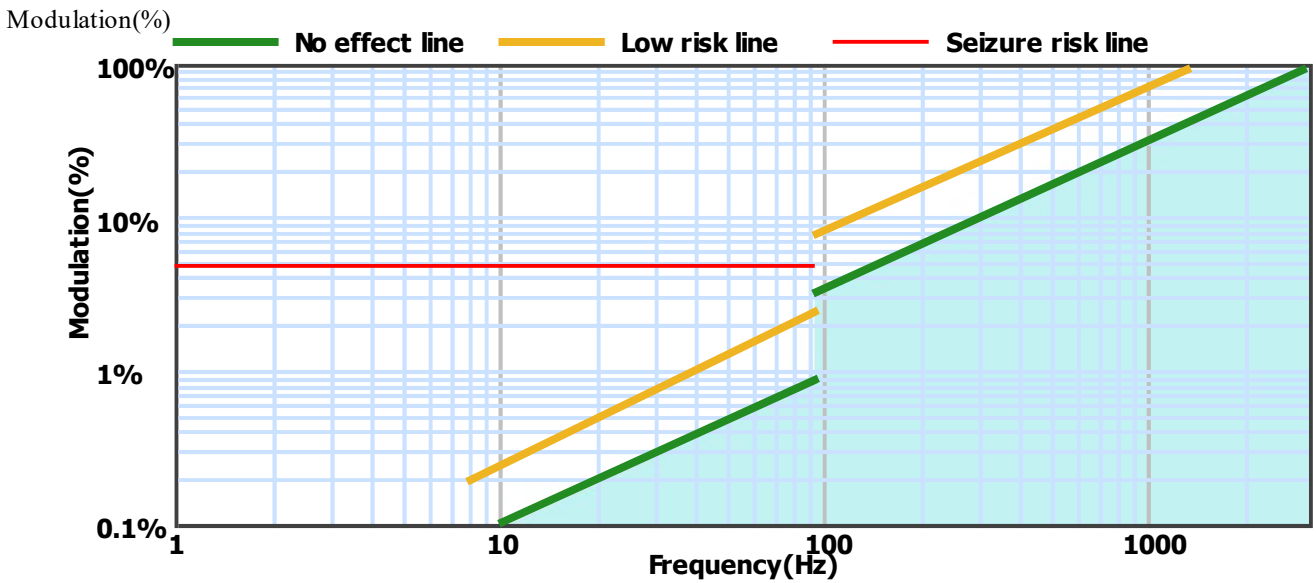
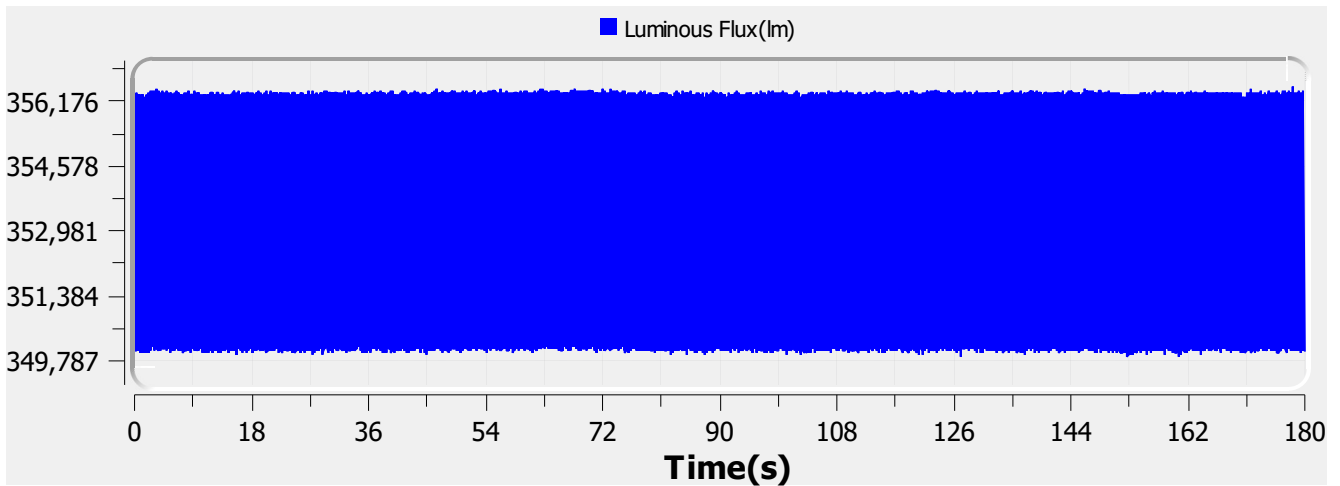
Flicker Test Report

Test condition

Photometric Type Luminous Flux(lm) Test range: Range2 Sampling Mode: Software
 Samplerate: 20 kS/s Sampling Time: 180.00 s

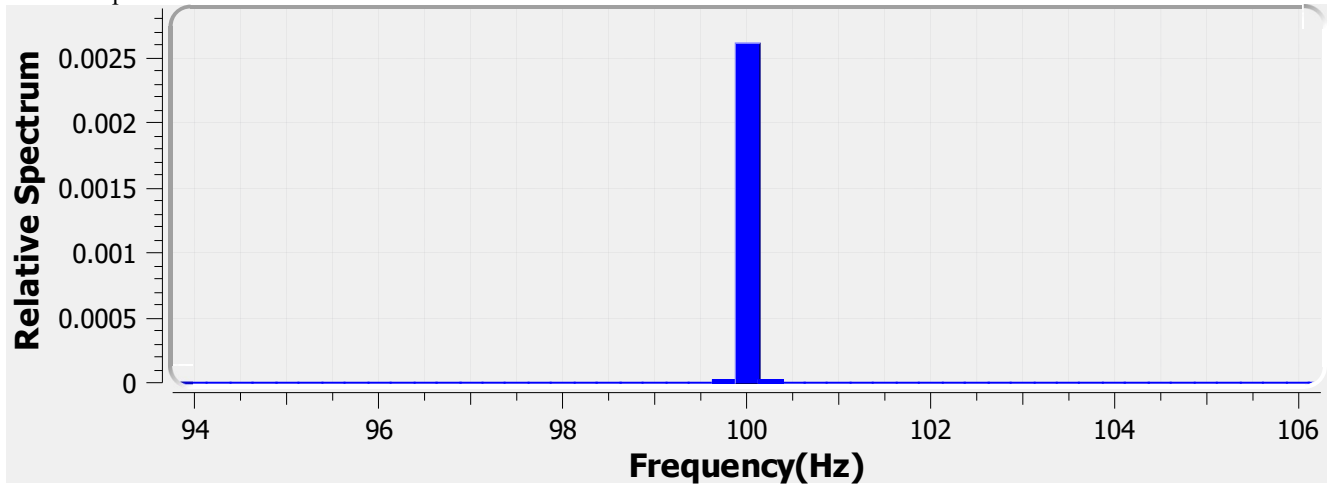
Test Wave

Local Waveform(0.000-180.000s)



| | | | |
|------------------------|------------------------|---------------|---------------------------|
| Name: | CIRKEL RND/SQR FIX/ADJ | Type: | LUMINAIRE |
| SN: | ELA-CKL-xxxx-000 | Manufacturer: | Eagle Lighting Australia |
| Tester: | Jules Zaccak | Sample time: | 2020-5-21 09:47:10 |
| Lamp base orientation: | Horizontal | Description: | |
| Remark: | | Standard: | IESNA 2000,CIE TN 006,etc |

Relative Spectrum Waveform



Test Result

| | | | | | |
|-------------------------|------------|-------------------------|----------------------------------|----------------------|-----------|
| Avg(lm): | 353.280 k | Max(lm): | 356.515 k | Min(lm): | 349.860 k |
| BASIC | | | | | |
| Frequency: | 100.000 Hz | | | | |
| IEC-Pst [10KS/s] | | | | | |
| Pst: | 0.012 | Result: | very acceptable | | |
| CA CEC | | | | | |
| PAM: | 0.942% | PAM(40Hz): | 0.028% | PAM(90Hz): | 0.034% |
| PAM(200Hz): | 0.701% | PAM(400Hz): | 0.699% | PAM(1000Hz): | 0.695% |
| ASSIST | | | | | |
| Flicker Index: | 0.002 | Percent Flicker: | 0.866% | d: | 0.000% |
| a: | 0.000 | MP: | 0.0 | fb: | 0.000Hz |
| DP: | 0% | Acceptability: | no consider stroboscopic effects | | |
| IEEE Std 1789 | | | | | |
| NM1: | 0.086 | NM2: | 0.206 | Module Depth: | 0.866% |
| Risk level: | No effect | | | | |
| CIE SVM | | | | | |
| SVM: | 0.020 | Visibility: | Not Visible | | |

| | | | |
|-------------------------------|------------------------|----------------------|---------------------------|
| Name: | CIRKEL RND/SQR FIX/ADJ | Type: | LUMINAIRE |
| SN: | ELA-CKL-xxxx-000 | Manufacturer: | Eagle Lighting Australia |
| Tester: | Jules Zaccak | Sample time: | 2020-5-21 09:47:10 |
| Lamp base orientation: | Horizontal | Description: | |
| Remark: | | Standard: | IESNA 2000,CIE TN 006,etc |

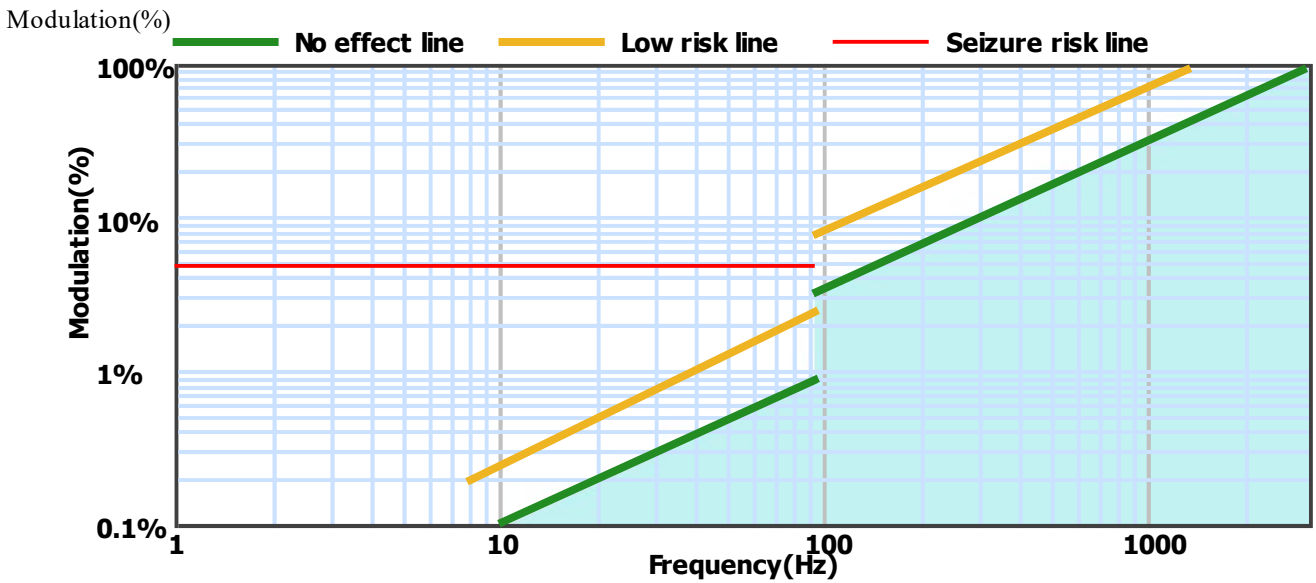
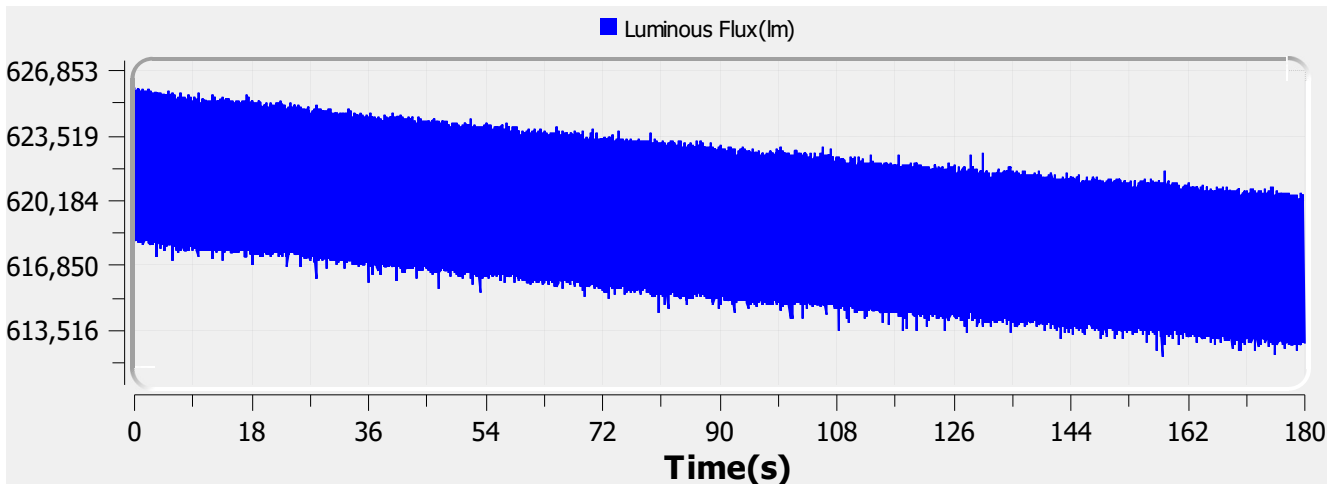
Flicker Test Report

Test condition

Photometric Type Luminous Flux(lm) Test range: Range3 Sampling Mode: Software
 Samplerate: 20 kS/s Sampling Time: 180.00 s

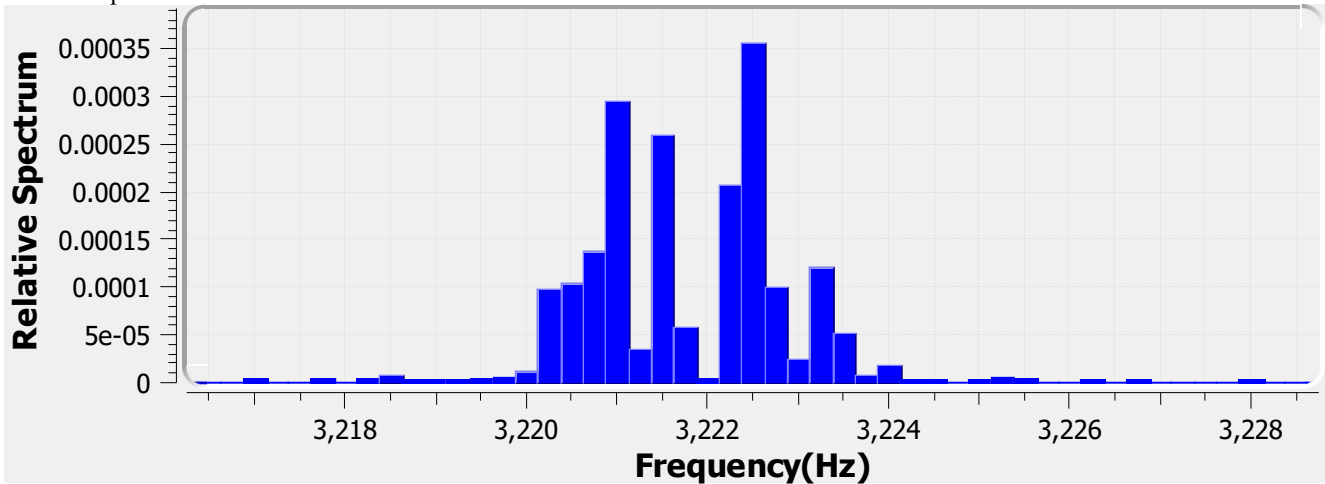
Test Wave

Local Waveform(0.000-180.000s)



| | | | |
|-------------------------------|------------------------|----------------------|---------------------------------|
| Name: | CIRKEL RND/SQR FIX/ADJ | Type: | LUMINAIRE |
| SN: | EL-CKL-xxxx-000 | Manufacturer: | Eagle Lighting Australia |
| Tester: | Jules Zaccak | Sample time: | 2020-5-7 13:21:32 |
| Lamp base orientation: | Horizontal | Description: | REC WH/BLK 930 15W 1450LM 24DEG |
| Remark: | | Standard: | IESNA 2000,CIE TN 006,etc |

Relative Spectrum Waveform



Test Result

| | | | | | |
|-------------------------|-----------|-------------------------|----------------------------------|----------------------|-----------|
| Avg(lm): | 619.054 k | Max(lm): | 626.009 k | Min(lm): | 612.116 k |
| IEC-Pst [10KS/s] | | | | | |
| Pst: | 0.000 | Result: | very acceptable | | |
| CA CEC | | | | | |
| PAM: | 1.122% | PAM(40Hz): | 0.032% | PAM(90Hz): | 0.039% |
| PAM(200Hz): | 0.127% | PAM(400Hz): | 0.131% | PAM(1000Hz): | 0.144% |
| ASSIST | | | | | |
| Flicker Index: | 0.005 | Percent Flicker: | 0.437% | d: | 0.000% |
| a: | 0.000 | MP: | 0.0 | fb: | 0.000Hz |
| DP: | 0% | Acceptability: | no consider stroboscopic effects | | |
| IEEE Std 1789 | | | | | |
| NM1: | 0.000 | NM2: | 0.000 | Module Depth: | 0.437% |
| Risk level: | No effect | | | | |
| CIE SVM | | | | | |
| SVM: | 0.002 | Visibility: | Not Visible | | |

| | | | |
|-------------------------------|------------------------|----------------------|---------------------------------|
| Name: | CIRKEL RND/SQR FIX/ADJ | Type: | LUMINAIRE |
| SN: | EL-CKL-xxxx-000 | Manufacturer: | Eagle Lighting Australia |
| Tester: | Jules Zaccak | Sample time: | 2020-5-7 13:21:32 |
| Lamp base orientation: | Horizontal | Description: | REC WH/BLK 930 15W 1450LM 24DEG |
| Remark: | | Standard: | IESNA 2000,CIE TN 006,etc |