

CLEANROOM IP65 LED

NXTGEN / UPDATED JUNE 2017



eaglelightingaustralia
'Member of the Fagerhult Group'



Designed, tested and manufactured in Australia, the Cleanroom IP65 LED is a durable watertight and dust-tight fixture with premium build quality and high efficacy.

Frame/Body

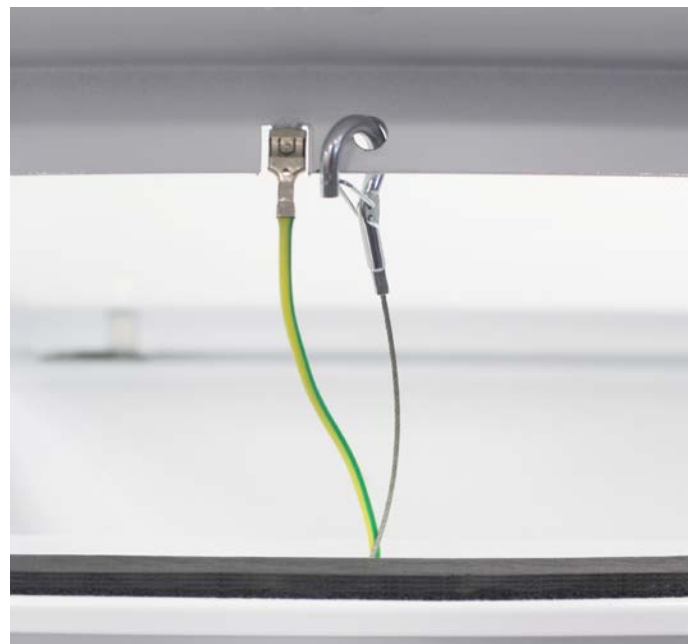
The two-part construction of the frame consists of a clear wipe-down acrylic on the outer side and a Delta diffuser with light-guiding micro-structure on the inner side.

This special micro-structure controls the light to ensure a wider distribution.

The internal frame has been constructed with no joins, which guarantees a seamless seal between the frame and the gasket thus ensuring water and dust tightness to IP65.

The stainless steel safety lanyards with snap-hooks have a 30kg safe working load. The snap-hook lanyards ensure the contractor can install the frame single handedly to the body without the use of tools or assistance.

The frame is attached to the main body by magnets. The main body is fixed to the ceiling via 6 toggle arms.



Gasket

The closed cell robust gasket is flame retardant, non-tearing, abrasion resistant and self-extinguishing.

The gasket compresses easily and recovers quickly to its uncompressed state to ensure it can be compressed again, maintaining its seal.

The luminaire is IP65 from all sides. Please refer to table 1.0 - IP Rating for what this classification represents

Table 1.0 IP Rating

Level	Effective against	
First Digit: Solids Protection		
6	Dust Tight	No ingress of dust; complete protection against contact.
Second Digit: Liquids Protection		
5	Water Jets	Water projected by a nozzle (6.3mm) against enclosure from any direction shall have no harmful effects.



Magnets and sealants

The use of magnets to attach the frame to the main body eliminates the need for screws on the front. This ensures that it is not only easier to clean and therefore less likely that bacteria will build-up, but also easier to install.

The six rare-earth neodymium magnets are permanent magnets that have high resistance to demagnetization over time. They are triple plated in nickel/copper/nickel to prevent corrosion.

The fixing of the internal magnets is such that they are designed to float. This feature ensures a flush contact with the frame assembly.

Installation & Maintenance

A suction cup tool is supplied as standard in order to remove the frame from the ceiling. Place in one corner onto frame and pull directly down, whilst using the free hand to lower the frame. The stainless steel lanyards with snap-hooks, which are secured to the body of the luminaire, ensure that the frame will not fall. The stainless steel lanyards will hinge the frame to the body.

No chemicals should touch the magnets when cleaning the luminaire. Use a damp cloth and then dry to clean.

LEDs and driver

The new LED boards provide higher efficacy and performance and the programmable driver allows for greater flexibility to adjust the output levels to meet specific illuminance levels.

CRI 90+ version is COI compliant.

The DALI Driver has amplitude modulation dimming across the entire range 100-1% to ensure flicker-free and noise free operation.

EXAMPLE SUCTION CUP PROCESS

PLEASE NOTE: Cleanroom LED IP65 shown



Understanding Cyanosis and Light



CLINICAL OBSERVATION HAS ALWAYS BEEN AN IMPORTANT PART OF MEDICAL DIAGNOSIS.

One significant aspect of clinical observation is the reliable detection of cyanosis, that is, the bluish discolouration in the skin and mucous membranes indicating that oxygen level in the blood is dangerously low.

While pulse oximeters are used in operating rooms and recovery areas, there are areas within hospitals where these are not universally used. There are some medical conditions, for example where patients have poor peripheral circulation, that can make their use unreliable. In these instances, the ability of medical staff to reliably detect the onset of cyanosis by visual observation may be critical to a patient's wellbeing.

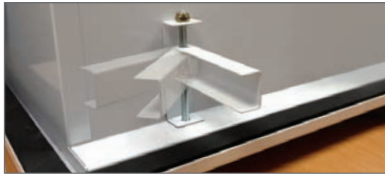
Using the data from the first trials and the known reflective properties of blood, a methodology for calculating a Cyanosis Observation Index (COI) was established and published in AS/NZS 1680.2.5:1997.3

The Australian standard for cyanosis is very demanding. The standard defines Cyanosis Observation Index with an open-

ended numerical scale which ranks an artificial light source for the purpose of visual observation, a key fundamental to medical practitioners.

The COI is a dimensionless number and is a function of the spectral power distribution of the lamp. The methodology involves calculating the colour difference between blood when viewed under the test lamp and under the reference lamp (a 4000K Planckian source) for 50% and 100% oxygen saturation and averaging the results. To comply with the AS 1680.2.5 requirements for the reliable diagnosis of cyanosis, the COI must be 3.3 or lower and the lamp correlated colour temperature must be between 3300K and 5500K.

Lamp efficacy has a varying impact on lighting design. Many recommended lighting levels in hospitals are generally in the 160–240 lux range and these are readily achieved by lower efficacy lamps at practical spacings. For larger areas and areas where higher illuminance levels are recommended, higher efficacy can be advantageous.



Nitrile Gasket & Installation brackets



CLEANROOM IP65 LED

CRI 90+

W	Size (mm)	Sys. lm	Lum. lm	lm/W	CCT (K)	Code
CR65L Plaster Recess, Bottom Access, Delta, CRI 90+						
17	660 x 350	2000	1438	87	4000	EL-CR65L-3102-
24	660 x 350	3000	2143	88	4000	EL-CR65L-3103-
33	660 x 350	4000	2857	86	4000	EL-CR65L-3108-
29	680 x 680	4000	2850	98	4000	EL-CR65L-5102-
44	680 x 680	6000	4241	96	4000	EL-CR65L-5103-
61	680 x 680	8000	5631	93	4000	EL-CR65L-5108-
28	1220 x 350	4000	2884	102	4000	EL-CR65L-1102-
43	1220 x 350	6000	4279	100	4000	EL-CR65L-1103-
59	1220 x 350	8000	5672	96	4000	EL-CR65L-1108-
	Seismic Restraint Kit - 4 x gripple, 2 x 2m wire					EL-ACC-210-000



The CRI 90+ version ensures excellent colour rendition, particularly in environments where correct colour is critical. It also assists healthcare workers to detect cyanosis and other colour changes on the skin or in body tissues. The luminaire is COI compliant.

The wipe-down Delta diffuser is made up of a micro-prism louvre in acrylic (PMMA) with a thin opal diffuser on the inside. This provides excellent glare control whilst delivering optimal lumens out of the luminaire.

The Cleanroom range of luminaires has been developed to meet the requirements of specialist installations where the luminaire requires protection against contamination. This range is rated IP65 from all angles.

The screwless frame is fixed to the body by floating magnets. Using a magnet to attach the frame ensures that it is easy to install and clean.

Seismic restraint enabled.

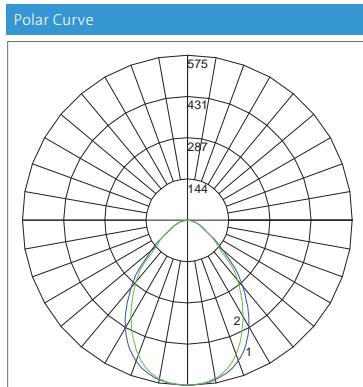
Options:

- » T-Bar
- » Surface mount
- » Top access
- » Sandwich Panel
- » Non Monitored Emergency
- » DALI Monitored Emergency
- » Customisable size on request

Wiring options	Suffix
Standard	-000
DALI/STD terminal block	-200
Maintained Emergency	-800

Add one suffix code to the end of the luminaire code to indicate required function.

Lumen Maintenance			
W	Size	Spacing	Lifetime
28W	1220 x 350	2.4m x 2.4m	TM21 L ₉₀ (12k) 38,000hrs
43W	1220 x 350	2.4m x 2.4m	TM21 L ₉₀ (12k) 38,000hrs
59W	1220 x 350	2.4m x 2.4m	TM21 L ₉₀ (12k) 37,000hrs

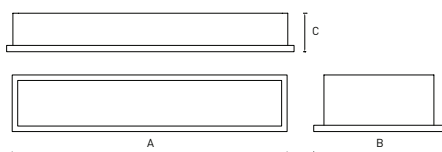


EL-CR65L-1000
Maximum Candela = 574.8 cd/klm
1 - Vertical Plane Through Horizontal Angles (0 - 180)
2 - Vertical Plane Through Horizontal Angles (90 - 270)

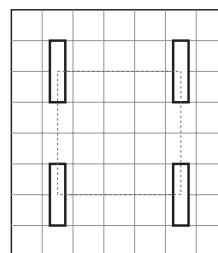
Technical specifications	
Luminaire Efficacy	≥86lm/W
MacAdam 3 SDCM (initial)	
System guarantee	5 years
CRI:	≥94
R _g :	≥72
COI:	≥2.5



Nominal dimensions (mm)



FITTING	FITTING DIMENSIONS			CUTOUT	WEIGHT KG.
	A	B	C		
Codes 3102, 3103, 3108	660	350	100	630 x 325	7.0
Codes 5102, 5103, 5108	680	680	100	655 x 655	12.0
Codes 1102, 1103, 1108	1220	350	100	1195 x 325	11.8



Performance Summary - CRI 90+

Average (Centre) LUX LEVEL:
2.4m x 2.4m LAYOUT 1220mmx350mm

CR65L - 28W = 414 lux UGR Max 17.9

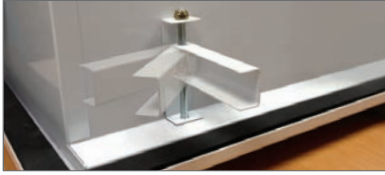
CR65L - 43W = 613 lux UGR Max 19.2

CR65L - 59W = 813 lux UGR Max 20.2

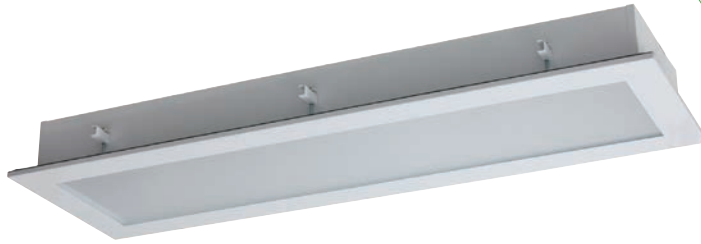
Design parameters

Maintenance: 0.8 Reflectance: 70/50/20

Ceiling height: 2.7m Working plane: 720mm



Nitrile Gasket & Installation brackets



CLEANROOM IP65 LED

CRI 80+

W	Size (mm)	Sys. lm	Lum. lm	lm/W	CCT (K)	Codew
CR65L Plaster Recess, Bottom Access, Delta, CRI 80+						
14	660 x 350	2000	1452	102	4000	EL-CR65L-3100-
21	660 x 350	3000	2172	105	4000	EL-CR65L-3101-
28	660 x 350	4000	2874	104	4000	EL-CR65L-3109
25	680 x 680	4000	2887	118	4000	EL-CR65L-5100-
37	680 x 680	6000	4237	116	4000	EL-CR65L-5101-
50	680 x 680	8000	5632	113	4000	EL-CR65L-5109-
24	1220 x 350	4000	2894	121	4000	EL-CR65L-1100-
36	1220 x 350	6000	4276	119	4000	EL-CR65L-1101-
49	1220 x 350	8000	5676	116	4000	EL-CR65L-1109-
	Seismic Restraint Kit - 4 x gripple, 2 x 2m wire					EL-ACC-210-000



The Cleanroom range of luminaires has been developed to meet the requirements of specialist installations where the luminaire requires protection against contamination.

This range is rated IP65 from all angles.

The wipe-down Delta diffuser is made up of a micro-prism louver in acrylic (PMMA) with a thin opal diffuser on the inside. This provides excellent glare control whilst delivering optimal lumens out of the luminaire.

The screwless frame is fixed to the body by floating magnets. Using a magnet to attach the frame ensures that it is easy to install and clean.

Seismic restraint enabled.

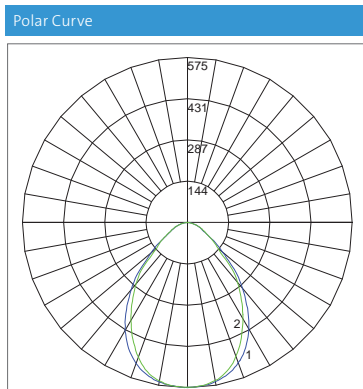
Options:

- » T-Bar
- » Surface mount
- » Top access
- » Sandwich Panel
- » Non Monitored Emergency
- » DALI Monitored Emergency
- » Customisable size on request

Wiring options	Suffix
Standard	-000
DALI/STD terminal block	-200
Maintained Emergency	-800

Add one suffix code to the end of the luminaire code to indicate required function.

Lumen Maintenance			
W	Size	Spacing	lifetime
24W	1220 x 350	2.4m x 2.4m	TM21 L ₉₀ (12K) 38,000hrs
36W	1220 x 350	2.4m x 2.4m	TM21 L ₉₀ (12K) 38,000hrs
49W	1220 x 350	2.4m x 2.4m	TM21 L ₉₀ (12K) 37,000hrs



EL-CR65L-1000
Maximum Candela = 574.8 cd/klm
1 - Vertical Plane Through Horizontal Angles (0 - 180)
2 - Vertical Plane Through Horizontal Angles (90 - 270)

Technical specifications	
Luminaire Efficacy	≥102lm/W
MacAdam 3 SDCM (initial)	
System guarantee	5 years
CRI:	≥84
R _g :	≥10



Nominal dimensions (mm)					Performance Summary - CRI 80+																																		
					Average (Centre) LUX LEVEL: 2.4m x 2.4m LAYOUT 1220mmx350mm																																		
<table border="1"> <thead> <tr> <th>FITTING</th> <th>A</th> <th>B</th> <th>C</th> <th>CUTOUT</th> <th>WEIGHT</th> </tr> </thead> <tbody> <tr> <td>Codes 3100, 3101, 3109</td> <td>660</td> <td>350</td> <td>100</td> <td>630 x 325</td> <td>7.0</td> </tr> <tr> <td>Codes 5100, 5101, 5109</td> <td>680</td> <td>680</td> <td>100</td> <td>655 x 655</td> <td>12.0</td> </tr> <tr> <td>Codes 1100, 1101, 1109</td> <td>1220</td> <td>350</td> <td>100</td> <td>1195 x 325</td> <td>11.8</td> </tr> </tbody> </table>					FITTING	A	B	C	CUTOUT	WEIGHT	Codes 3100, 3101, 3109	660	350	100	630 x 325	7.0	Codes 5100, 5101, 5109	680	680	100	655 x 655	12.0	Codes 1100, 1101, 1109	1220	350	100	1195 x 325	11.8	<table border="1"> <tbody> <tr> <td>CR65L - 24W =</td> <td>415lux</td> <td>UGR Max 17.9</td> </tr> <tr> <td>CR65L - 36W =</td> <td>613lux</td> <td>UGR Max 19.3</td> </tr> <tr> <td>CR65L - 49W =</td> <td>814lux</td> <td>UGR Max 20.3</td> </tr> </tbody> </table>		CR65L - 24W =	415lux	UGR Max 17.9	CR65L - 36W =	613lux	UGR Max 19.3	CR65L - 49W =	814lux	UGR Max 20.3
FITTING	A	B	C	CUTOUT	WEIGHT																																		
Codes 3100, 3101, 3109	660	350	100	630 x 325	7.0																																		
Codes 5100, 5101, 5109	680	680	100	655 x 655	12.0																																		
Codes 1100, 1101, 1109	1220	350	100	1195 x 325	11.8																																		
CR65L - 24W =	415lux	UGR Max 17.9																																					
CR65L - 36W =	613lux	UGR Max 19.3																																					
CR65L - 49W =	814lux	UGR Max 20.3																																					
<table border="1"> <thead> <tr> <th colspan="2">Design parameters</th> </tr> </thead> <tbody> <tr> <td>Maintenance: 0.8</td> <td>Reflectance: 70/50/20</td> </tr> <tr> <td>Ceiling height: 2.7m</td> <td>Working plane: 720mm</td> </tr> </tbody> </table>					Design parameters		Maintenance: 0.8	Reflectance: 70/50/20	Ceiling height: 2.7m	Working plane: 720mm																													
Design parameters																																							
Maintenance: 0.8	Reflectance: 70/50/20																																						
Ceiling height: 2.7m	Working plane: 720mm																																						

Other Lighting Resources



Light for Caring Heroes

Having control over our own lives is important for all of us. However, when we end up in hospital, planned or unplanned, this control can be passed over to the hands of others. This stressful situation is magnified by being in an environment which we do not recognise.



Aureled Vista

The Aureled Vista has been developed with healthcare environments in mind. The Aureled Vista is available with a range of different imagery designed to promote a relaxing and reassuring environment for patients.



The Healing Power of Light

A guide to Healthcare Lighting Solutions. From operating theatres to wards and communication spaces, Eagle Lighting has a full portfolio of lighting solutions for any healthcare application.

eagle lighting australia



www.eaglelighting.com.au

VICTORIA

17-19 Jets Court
Melbourne Airport VIC 3045
P 03 9344 7444
F 03 9344 7433

NEW SOUTH WALES

Unit 4, 21 Mars Road
Lane Cove NSW 2066
P 02 9420 5799
F 02 9420 5988

QUEENSLAND

53 Caswell Street
East Brisbane QLD 4169
P 07 3891 0744
F 07 3891 0755

AUSTRALIAN CAPITAL TERRITORY

M 0411 889 406

DISTRIBUTORS - AUSTRALIA

WESTERN AUSTRALIA

H.I. Lighting Pty Ltd
111 Broadway
Bassendean WA 6054
P 08 9377 1322
F 08 9377 1761

SOUTH AUSTRALIA

H.I. Lighting SA Pty Ltd
8 Hender Avenue
Magill SA 5072
P 08 8304 8500

TASMANIA

Southern Lighting & Distribution
34 Federal Street
North Hobart TAS 7000
P 03 6231 5599
F 03 6231 5211

DISTRIBUTORS - NEW ZEALAND

AUCKLAND

Fagerhult New Zealand
Level 1, 18A Neilpark Drive
East Tamaki, Auckland 2013
M +64 21 655 609
M +64 21 509 248

WELLINGTON

Fagerhult New Zealand
M +64 21 597 900

SOUTH ISLAND

Fagerhult New Zealand
M +64 21 193 4430